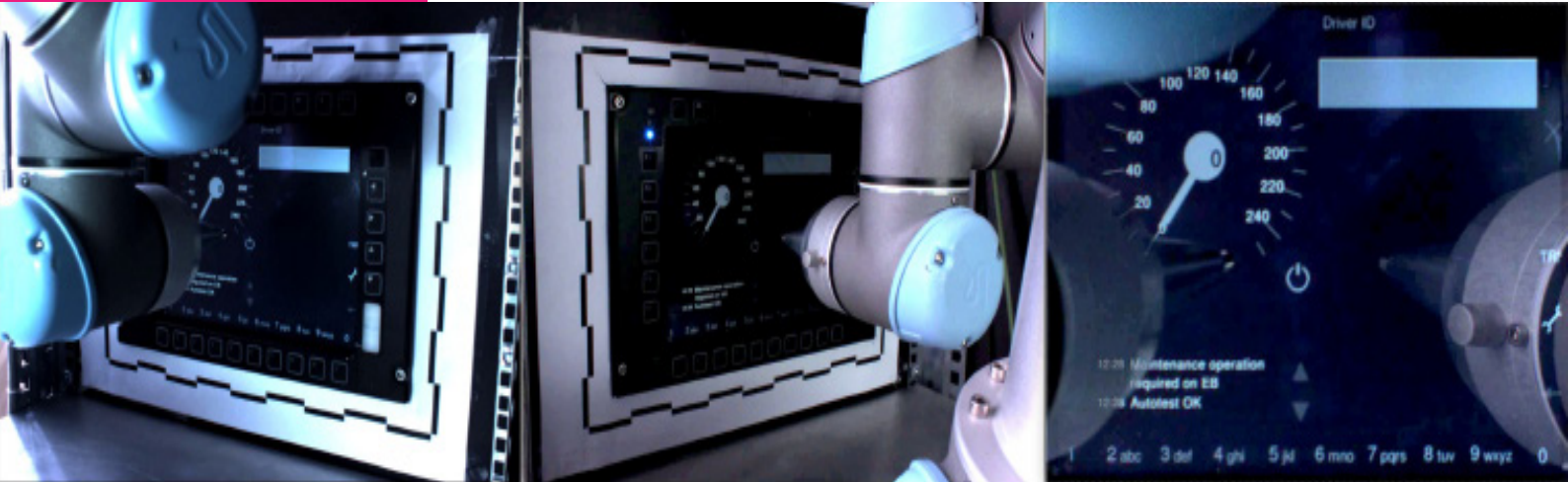




Multitel
Railway Certification

ERTMS/ECTS INTEROPERABILITY TEST BENCH



The Railway Certification department of Multitel is specialized in ERTMS testing solutions. It gives support to the certification, provides performance and reliability test solutions to railway industry and offers maintenance solutions, train/track validation and validation support of ERTMS deployment to railway infrastructure managers.

Multitel is ISO 17025 (BELAC 427 TEST) accredited for EVC tests (UNISIG SUBSET-026, SUBSET-076 and SUBSET-094) and Eurobalise/BTM test (UNISIG SUBSET-036 and SUBSET-085).

■ ERTMS / ECTS Interoperability Test Bench

ERTMS/ETCS Interoperability Test Bench (EIT) is a tool to analyse the behaviour of ERTMS/ETCS onboard equipment based on the requirements of ERTMS/ETCS standards:

- Subset-026, Baseline 2/3
- Subset-076, Baseline 2/3

■ Characteristics

- Full Subset-094 Architecture
- Controllable interface between EIT and EUT (Equipment under test)
- Open test scenario editor enabling personalised test

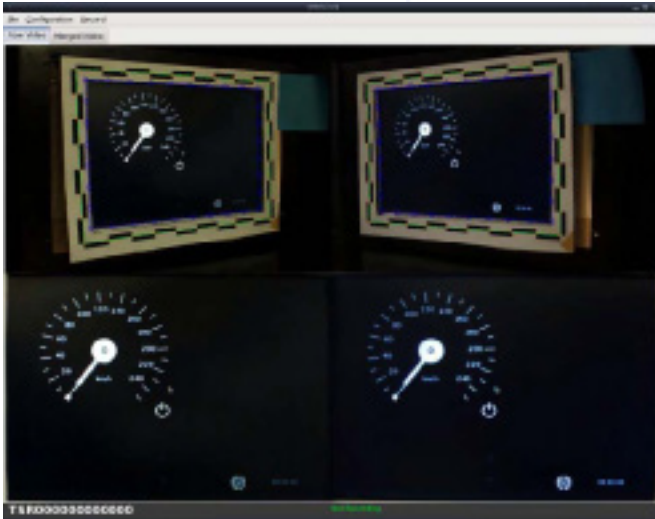
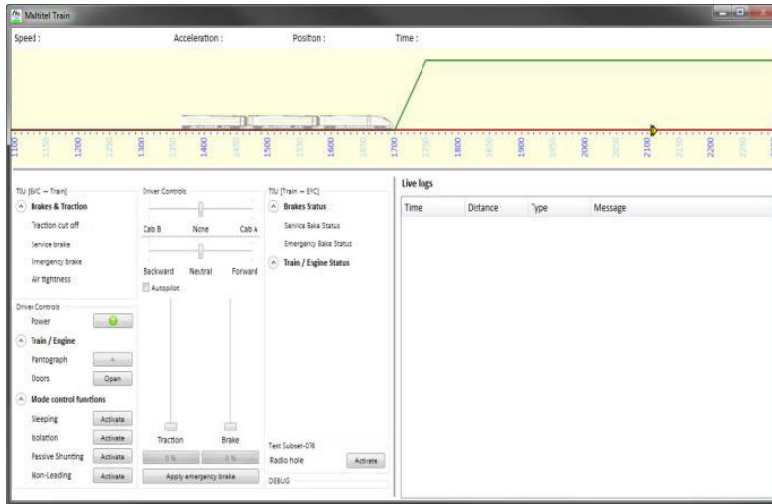
The tool consists of a part of hardware equipments and a software programme which allows to control the hardware equipment via pre-defined communication protocol.

■ Software Functionalities

- Multirail Lab Test Manager
- DMI Event Recorder
- Multirail Lab SATAV Test Validation Tools

■ Hardware

- ERTMS/ECTS Interface Unit
- Balise Telegram Simulator
- DMI Event Manager
- Robot Control Interface
- SATAV Server



ERTMS/ECTS Interoperability Test Bench (EIT) : answers most of the expectations from the industry related to tests which have to be :

- Repeatable
- Reproducible
- Accurate
- Under control (with less human factors whenever it is possible)

Achieve FAST test campaigns to speed up ERTMS deployment

MULTITEL HEADQUARTERS

Parc Initialis
Rue Pierre et Marie Curie 2
7000 Mons - Belgium

EUROMETROPOLITAN RESEARCH CENTRE

ZI Tournai Ouest 1
Rue du Progrès 13
7503 Tournai - Belgium

MULTITEL FRANCE

EuraTechnologies
165 Avenue de Bretagne
59000 Lille - France

ertms@multitel.be
Tel.: +32 65 34 28 84

